



LOWE CORPORATION
**RESCUE
HELICOPTER
SERVICE**

OFF THE LANDING PAD

SPRING NEWSLETTER 2021

INSIDE THIS ISSUE

News from the Hangar

Recent Missions

Meet our Paramedic

The brakes just stopped working...

The story as told by Daniel Beaver.

It was 6am. I had just picked up the logs from a crew in Raupaunga as I did many times a week. As I headed back to Napier, the brakes on my truck suddenly stopped working. No matter how hard I pushed, I couldn't get them to work.

By this point I've lost control of the logging truck and there is no room to run the truck into the bank to stop it. I take the corner and brace before the truck rolls over and slides across the gravel. Suddenly, CRUNCH, the cab has compacted in the force and I am up against the bank upside down.

This is where I stay for the next 40 minutes until someone finally found me. Another logging truck driver sees my crash, runs to the wreckage and calls out my name. I could hear the relief in his voice when I shouted out and he knew that I was still alive.

He called back to the loader driver from where I had just been to come down to help. They quickly realised there was nothing they could do without professional help so he called 111 and I heard him say, don't worry the rescue helicopter is coming. It felt like only seconds later and I could hear the helicopter coming in to land. The relief was instant. Finally, someone was there to help me.

I had no idea how damaged the truck was and just how stuck I was. In reality, the helicopter and the St John ambulance had turned up at the same time, so I suddenly had two incredibly well-trained Intensive Care Paramedics running to my aid. Between them and the helicopter crew, everyone tried to pull me



Carlton, our ICP, on the scene helping Dan.

out of the truck. Unfortunately, I was so stuck that without the help of the fire service, there was no way of getting me out safely. I didn't know, but at this point, I started to go really downhill. The paramedics were saying that if they didn't get me out soon, I wasn't going to survive.

Thankfully, the fire service turned up with the jaws of life to remove me from the crushed cab. It was a roaring sound as they finally got me free and pulled me out. From there the shock started to set in. The paramedics took over and worked on diagnosing the injuries I had sustained. There was severe damage to my right leg including large lacerations and I had broken bones. They also discovered that I had broken my arm and my back. I had bumps and bruises all over me and they were seriously worried about internal bleeding.

The next thing I remember is being loaded into the helicopter and hearing the engines start up before we flew off to Hawke's Bay Hospital. I could see out of the back windows and I saw the coast line of Napier and heard my phone ringing in my pocket. I was in no state to answer it but I knew it would be my wife, worried about me after hearing I had been in an accident.

contined over page>>

We then landed at the hospital, where my wife was waiting. I felt immense relief when I finally saw her face. The paramedic, Carlton, took me into the Emergency Department where the doctors and nurses took over. It's been a really long recovery. I am still unable to walk or sit for long periods of time. I can only just drive again but the idea of going back to work is still a long way off.

The pain, multiple operations and emotional rollercoaster I have been through have been incredibly hard but you know what? I'm here! The rescue helicopter and other emergency services were there for me on the day and between them and the hospital, I am on track to make a full recovery. When you see the picture of my truck overturned, you wouldn't think someone would survive that, let alone get back to normal. It's been a long road but I am so grateful to the Lowe Corporation Rescue Helicopter



Rescuing Dan out of the truck.

Service for being there for me when I needed it. **I wouldn't be here today without them.**

Daniel Beaver

WELCOME TO CORNELIUS – INTENSIVE CARE PARAMEDIC EXTRAORDINAIRE!

We have recently welcomed a new Intensive Care Paramedic to the team, Cornelius Venter. He is originally from South Africa but he moved to the middle east for four years working with United Arab Emirates National Search and Rescue Centre before coming to NZ with his wife Deidre. He is highly trained and has masses of varied experience so we're very lucky to have him as part of our team!

LET'S FIND OUT A LITTLE MORE ABOUT HIM...

Why did you become a paramedic?

The honest answer is that I did not have a sentinel moment or event that inspired my career choice. I was very fortunate from a young age to know that I wanted to be a paramedic 'one day'. Now, that I am a part of the pre-hospital emergency care services, I have come to learn the strength of a community and how we can rely on each other to look out for one another. I am deeply grateful to form part of a service that can support and work within the community.

How are you finding Hawke's Bay?

Where do I start? In short, Hawke's Bay is fantastic. The people are friendly, warm-hearted, and caring towards each other. The Bay is beautiful. We have mountains, beaches, lovely forestry, and wineries offering free access to many outdoor activities. This is our first visit/stay in New Zealand and we could not have imagined a better region to establish ourselves as a family.

What do you enjoy most about working for our Rescue Helicopter Service?

In my short time here, I have come to understand that the Rescue Helicopter is an integral part of the healthcare and welfare systems within the Hawke's Bay region – I am excited to form part of the team and contribute to the

community. The thing that I enjoy the most is that not one day is the same. I get to meet different people and see the natural beauty of Hawke's Bay and surrounding areas.

What is a memorable mission you have completed in Hawke's Bay?

Being a bit of a city slicker, I would have to say that the first mission I completed in Hawke's Bay where the dispatch information read: "... patient hit by bull". This served as a quick introduction to the type of calls we would encounter – learning very quickly that many of the calls we would respond to would require a unique approach to scene safety.



FOUNDING MEMBER USES RESCUE SERVICE 37 YEARS LATER



L to R: Gary Pettigrew, Noel Houston, Garrie Griffiths, Dave Wilson, Richard Parkinson, Barry Coleman, Kim Nilsson, Phil Harman, Peter Hannah and Paul Woolfe.

Little did Garrie Griffiths know in 1984 as he was one of the foundation members setting up the first Rescue Helicopter service in Hawke's Bay, that he would need the service himself 37 years later to save his life.

It all unfolded one Sunday in late July when Garrie was chopping back bamboo in his garden in Havelock North. He started feeling pain in his chest and quickly realised something was wrong. He called to his wife Marion, who immediately called 111. A St John Ambulance was dispatched and paramedics identified that he was having a heart attack. They administered thrombolysis medication, which dissolves blood clots that have formed in blood vessels. Garrie was very impressed with the amazing treatment he received by St John. The next step was to get him to Wellington as soon as possible for a stent to be inserted to save his life.

In recent years, a clinical pathway has been set up exactly for this situation. Previously, the St John Ambulance would need to take him directly to Hawke's Bay Hospital, and the Doctors would then make the call as to whether the patient needed transport to Wellington or not. Now, the St John Intensive Care Paramedic on the scene can make the decision to send the patient directly to Wellington via helicopter, so the patient receives the specialist care as quickly as possible. A stent must be inserted as soon as possible after a heart attack otherwise the likelihood of it working greatly decreases.

The ICP from St Johns made the call to take Garrie to Wellington and the ambulance brought him directly to our hangar where the helicopter was waiting with our crew ready to go. Our Intensive Care Paramedic, Cornelius, took over the care of Garrie for the flight and kept his pain relief under control as well as keeping an incredibly close eye on his heart rate and other vital signs. As they were flying to Wellington, the St John Paramedics sent the results from an ECG (electrocardiogram), as well as all their initial findings to the specialist waiting at Wellington Hospital. Cornelius then added to this record during the flight. By the time our helicopter landed on the roof in Wellington hospital, the cardiac specialists knew everything about the medical events that had unfolded that day and were ready to administer the lifesaving treatment Garrie needed.

His son Kyle flew down straight away from Auckland and arrived very quickly to support his dad. By the time Garrie's



Garrie and his wife Marion.

wife and daughter had arrived after driving down from the Bay, Garrie was stabilised and feeling much better. He spent a few days in Wellington and was then released back to his families waiting arms and driven back to Hawke's Bay.

His very grateful wife Marion says "I was so scared when they said that he was going to be flown straight to Wellington but when I realised it was the crew from the Rescue Helicopter taking him - I was so relieved as knew he was in good hands.

We are all beyond grateful for the care he received and the fact that the quick trip to the specialists he needed was available to him. It is nice to know that the work he did in those early days ensured that the service was here for him when he needed it."

Garrie said "Marion and I, and our daughter Holly, all recently went into the hangar with some morning tea to say thank you to the crew all for the wonderful work they do. It is hard to know how you can thank someone for saving your life but I knew Marion's home baking was a great start.

We are so lucky to have this service and available to our community, and I can't speak more highly of the professional service we all received from the crew who flew me down to Wellington that day.

I feel very proud to have been a part of getting the service set up initially and now also extremely grateful that I have been the recipient of their lifesaving service."

COVID-19 AND YOUR RESCUE HELICOPTER SERVICE

The August lockdown has shown us that unfortunately Covid-19 can return to our communities at any time.

Our service remains available for all of those who need it, no matter if we are in lockdown or not. Things can change at just a moments notice but you can rest assured knowing that our service will always be here, 24/7, 365 days a year.

This is thanks to YOU, our donors. Thank you for enabling us to be there for the Hawke's Bay Community at all times. We rely heavily on the generosity of people like you and you are truly saving lives with every donation you make.



2021 MAGPIES CLUB PACKAGES



Magpies Club have released their 2021 packages and as part of it they are including the option to add on lambs to be donated to the Lowe Corporation Rescue Helicopter Service! They have their standard membership levels of Gold, Silver, Bronze as well as Black and White. Get in touch with Jason Long on 0212204774 or email Jason.long@hbrugby.co.nz to find out more.



NAPIER PINE COME ON BOARD AS SPONSOR...

Established here in the Bay in 1999, Napier Pine Ltd has grown from humble beginnings to be a leading producer and exporter of premium Radiata Pine lumber products.

As a proud employer of more than 40 people we want to ensure our business activities benefit both our staff and the wider Hawke's Bay community. Napier Pine recognises the critical role the Lowe Corporation Rescue Helicopter Service performs helping keep our people safe.



napier pine

NEW ZEALAND

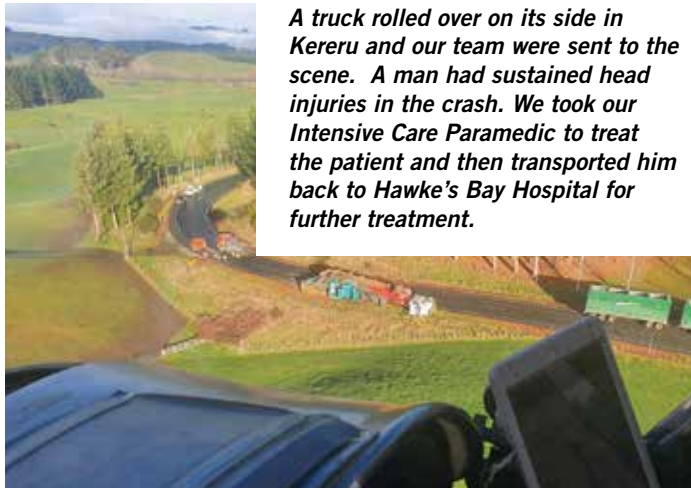
// RECENT MISSIONS: SO FAR IN 2021...

In the first 6 months of 2021 our missions have been up by 40% on last year!

Our team were tasked by Air Desk to fly a patient with a cardiac condition to Wellington Hospital for specialist treatment. Then on the way back we were urgently tasked to a patient who had neck injuries from a fall. We landed at the scene where our Intensive Care Paramedic assessed the patient and we flew her directly to Wellington Hospital for further treatment.



Our helicopter on the roof of Wellington Hospital



A truck rolled over on its side in Kereru and our team were sent to the scene. A man had sustained head injuries in the crash. We took our Intensive Care Paramedic to treat the patient and then transported him back to Hawke's Bay Hospital for further treatment.



The crew were tasked to a patient in Waipukurau who had fallen from his electric bike whilst out enjoying the cycle tracks and sustained a number of injuries. We treated him and took him to Hawke's Bay Hospital.

HOW CAN YOU CONTINUE TO SUPPORT THE TEAM AT THE LOWE CORPORATION RESCUE HELICOPTER INSTEAD OF MAKING A DONATION BY CHEQUE?



Call us on **06 878 1630** to donate via credit or debit card



Log into your internet banking and search for **Lowe Corporation Rescue Helicopter Service** in saved payees



You can go to your local bank and ask for them to make the donation for you. Our bank number is: **03-0104-0773390-000** and please use your Donor ID as reference



Donate online using your credit or debit card **www.hbhrt.org.nz**



Set up an **automatic payment**



Leave a **Bequest**

PLEASE CALL US ON 06 878 1630 IF THERE IS ANYTHING FURTHER THAT YOU NEED.

THANK YOU!

A huge thank you to our Corporate Sponsors who have supported the Trust on an ongoing basis.

Please support them if you can and also please contact us if you are interested in finding out more about our Corporate Sponsorship programme. **Ph 878 1630 or email mfm@hbhrt.org.nz**

THANK YOU TO OUR PLATINUM, DIAMOND, GOLD AND SILVER CORPORATE SPONSORS

Who help to keep our services free of charge and available 24/7 to everyone in our Community.

PLATINUM

Brownrigg Agriculture
Centralines Ltd
Farmlands Co-operative Society Ltd-Hastings
Hawke's Bay Regional Council
Vet Services (HB) Ltd

Advanced Plumbing HB Ltd
Alive Psychology - Bhavna Nagar
Awakeri Drainage Limited
Bridgeman Concrete Limited
Brittin Builders Ltd
Conroy Removals Ltd
Forest Management NZ
Heretaunga Tramping Club Inc

Tong & Peyer 2007 Ltd
Tribe
Tumu ITM Building Centre
Waimoe Farm

Harris Pumps & Filtration Ltd
Hastings Glass
Hatuma Lime Co Ltd
Heyhoe Engineering Ltd
Hygiene Technologies Ltd

DIAMOND

Napier Pine Ltd

Hustler Equipment Ltd
Hydralada Company Ltd
Kleer Contractors HB Ltd
MCL Construction Ltd
MW Lissette Ltd
Oil Intel Ltd
Rayonier NZ - Matariki Forests Ltd
Stephenson Transport Ltd

SILVER

ATI Engineering
Alexander Construction
Brendan Addis Ltd
Brookes Builders
DSK Engineering Ltd
East Coast Lumber Ltd
East Coast Stump Grinders Ltd
Electrical Process Development Ltd
Epplett & Co
Everfresh Ltd

Jamieson Earthworks Ltd
Mike Kettle Contracting Ltd
New Zealand Frost Fans Ltd
Newstead Farm
Oldershaw & Co Ltd
Plan A Consulting
Quality Roading & Service
Redshaw Livestock Ltd
Taradale Service Centre
Walsh & Associates
Waterforce Limited

If your Business would like to become a Friend of the Rescue Helicopter please call Beth on 878 1630

OUR FAMILY OF SPONSORS



Principal Sponsor
Since 1992

PAN PAC
PAN PAC FOREST PRODUCTS LIMITED



Associate Sponsors

NZCT

Bay Mazda | Brebner Print
CSG Limited | HB Technologies

Inkind Sponsors

DID YOU KNOW THAT THE HASTINGS DISTRICT COUNCIL FUNDS THE PRINTING OF THIS NEWSLETTER?

They support us every year to ensure we can get our messages to the Hawke's Bay Community and we are so appreciative!



KEEP IN CONTACT

Fundraising and Administration (06) 878 1630
Email: mfm@hbhrt.org.nz

 [facebook.com/hbrescuehelicopter](https://www.facebook.com/hbrescuehelicopter)



www.hbhrt.org.nz